

Crestpoint ROUNDS™

OCTOBER
2017
Volume 1
Issue 2

PUBLISHED FOR ALL OPHTHALMIC AUDIENCES: SURGEONS, YOUNG EYE SURGEONS, NURSES/TECHNICIANS AND PURCHASING TEAMS

IN THIS ISSUE

Primary (Main) Incisions for Cataract Surgery:

<i>MANI</i>	Cover, 2, 4
<i>Duckworth & Kent Diamond Knives</i>	2
<i>GEUDER Diamond Knives</i>	3
<i>Sterimedix Disposables Cannulae</i>	3
<i>Crestpoint and MANI</i>	4
MANI Headquarters.....	4
MANI Case and Knife Handling.....	4
AAO New Orleans.....	4
About Us.....	4
Contact Us.....	4

Primary (Main) Incisions for Cataract Surgery

To our valued customers:

Welcome to Issue 2, Primary Incisions/Cataract Surgery, **best of the best.** Crestpoint is exclusive USA Distributor for MANI Knives. MANI Ophthalmic Knives and Sutures are manufactured of hard fiber stainless steel, strong and break-resistant. Crosslapped edge manufacturing technique produces ultimate sharpness, consistent quality and precision.

Ideal for making corneal and scleral incisions, tunneling and flaps:

- Extreme Sharpness and High Visibility.
- **NEW Marked Line Short-Head Slit Knives** feature 1.5mm and 2.0mm markings from blade tip.
- **NEW Short-Head Crescent Knives**, ideal for scleral tunnels and flaps.
- **Safety Knives** have a protective handling feature (diagram page 4).

Our November issue will feature Capsulorhexis and spotlight on Duckworth & Kent Titanium instruments.

One
Source®

Sincerely,
The Crestpoint Team

J. Michelle Glossip
Chief Executive

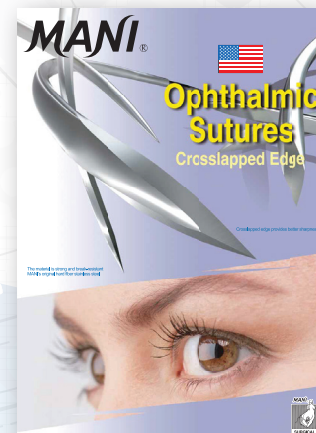
Henry M. Mitchell
President

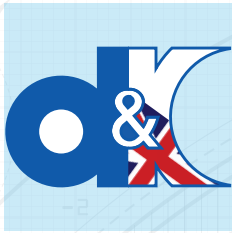
Dot C. Smith
Customer Resource
Director

Michael Dill
Customer Resource
Manager



Visit us at AAO 2017
#816, 919, 921 and 925
to see our complete line
of products displayed
and special promotional
offers for you.



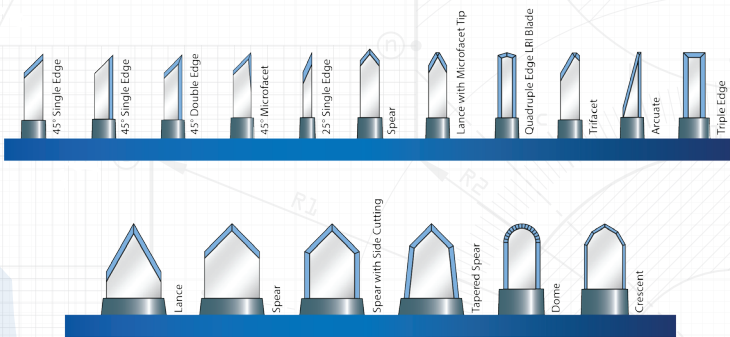


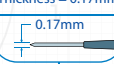
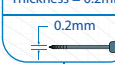

Duckworth & Kent

Original manufacturer of titanium surgical instruments for ophthalmology.

Diamond Knives

Many blade and handle styles are available. Angled Retractable Knives feature the diamond mounted at 45° angle to the handle, commonly used for creating Primary (Main) Incisions. Straight Retractable Knives feature a straight mounted diamond blade, used for free hand cutting and side port incisions.



1mm Lance Diamond Knife Straight Retractable Handle Length 124mm Tip : Width = 1mm Length = 3.5mm Thickness = 0.17mm 	2mm Dome Diamond Knife Angled Retractable Handle Length 137mm Tip : Width = 2mm Length = 4mm Thickness = 0.2mm 	2.8mm Spear Diamond Knife Angled Retractable Handle Length 137mm Tip : Width = 2.8mm Length = 4mm Thickness = 0.17mm 
4-122	4-480	4-430

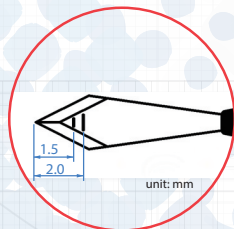


MANI®

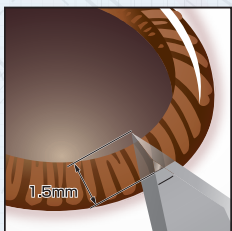
Specializes in single use Knives, Sutures, Trocars for all ophthalmic procedures.

Short-Head Slit Knife

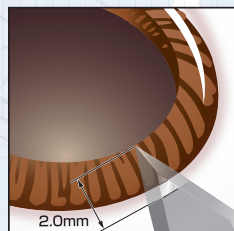
Main Application: Corneal Incision, Scleral Incision, 6pcs/box



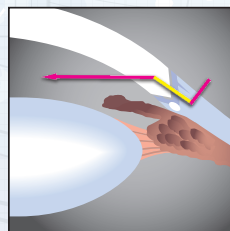
Example of use of the marking lines



Corneal Incision

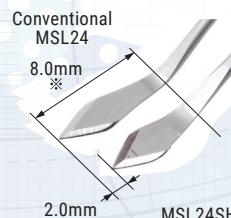


Scleral Incision



Perforation towards anterior chamber using the marking lines as an indicator.

Product Name	Order#
Slit Angled 2.0mm (Short-Head)	MSL20SH
Slit Angled 2.1mm (Short-Head)	MSL21SH
Slit Angled 2.2mm (Short-Head)	MSL22SH
Slit Angled 2.3mm (Short-Head)	MSL23SH
Slit Angled 2.4mm (Short-Head)	MSL24SH
Slit Angled 2.5mm (Short-Head)	MSL25SH
Slit Angled 2.65mm (Short-Head)	MSL26SH
Slit Angled 2.75mm (Short-Head)	MSL27SH
Slit Angled 2.8mm (Short-Head)	MSL28SH
Slit Angled 2.9mm (Short-Head)	MSL29SH
Slit Angled 3.0mm (Short-Head)	MSL30SH



Extreme Sharpness, Simple Operation, High Visibility

Position of Knife Angle moved 2mm towards the tip and the blade became smaller with extreme sharpness as our conventional models. Effective for a patient who has sunken/deep-set eye (enophthalmos) or narrow lid fissure. Less possibility of contacting with eye speculum and drapes. In addition, marking lines at 1.5mm and 2.0mm from the blade tip enable simple operation for creating tunnel.

※ MSL20~24SH= (8mm→6mm) MSL25~30SH= (9mm→7mm)



GEUDER®

Leading manufacturer of high quality surgical instruments for ophthalmology. It has always been the maxim of GEUDER to guarantee the highest degree of precision and reliability.

DIACLEAN® Diamond Knives

Grid-like handle allows for effective care and handling.
 Mechanical reprocessing in accordance with most recent International Guidelines for Reprocessing of Medical Devices.
 Blade is perfect under 500x magnification with an abrasive hardness of 140 times that of sapphire and ruby.



G31468



G38444



G38447



G38450



G38451



Sterimedix®

Complete range of single use devices for all ophthalmic surgery procedures.

Anterior Chamber Maintenance Cannulas

For maintaining and forming the anterior chamber during surgery by injecting or removing viscoelastic materials, BSS or air.



M2270	30G x 7/8"	0.3 x 22mm	Anterior Chamber Cannula. Angled 35°, 4mm from tip (Rycroft)
M2273A	27G x 7/8"	0.3 x 22mm	Anterior Chamber Cannula. Angled 35°, 4.5mm from tip (Rycroft)

Irrigating/Aspirating Cannulas and Handpieces

For the aspiration of cortex while simultaneously maintaining the AC with a continuous irrigating flow



M5570	24G	Soft Outer I/A Handpiece for 2.2mm incisions. Straight tip
M5571	24G	Soft Outer I/A Handpiece for 2.2mm incisions. 45° angled tip
M5572	24G	Soft Outer I/A Handpiece for 2.2mm incisions. 60° angled tip
M5573	24G	Soft Outer I/A Handpiece for 2.2mm incisions. 90° angled tip



M5591	30G x 7/8"	1.47/0.56mm	I/A Handpiece for 2.2mm incisions. Curved tip
--------------	------------	-------------	---

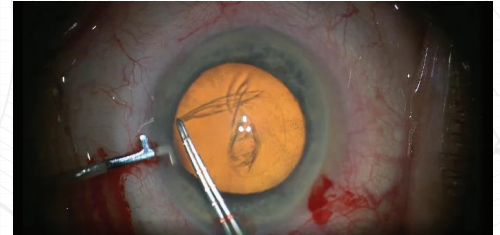
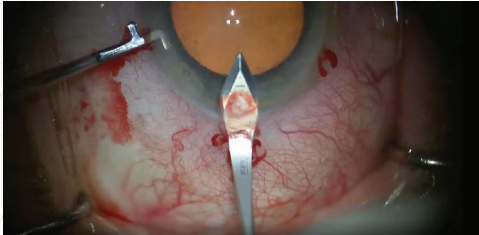


Mr.Phaco® / Mr.Femto®

One Source service and support for your ophthalmic needs. New innovative instruments, repair/replacement program, custom instruments. Excellent reputation for service and quality.

Ogawa Stamler Hook PH6018

The Ogawa Stamler Hook stabilizes the globe for keratome entry and capsulorhexis creation. Provides omni-direction fixation of globe via paracentesis opening (0.9mm to 1.2mm). This robust fixation Hook has rounded corners and sides to make placement easy and atraumatic.



[Click for video](#)

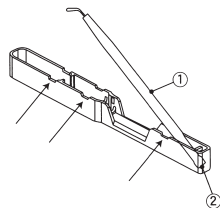
MANI Headquarters

MANI Ultimate Sharpness. Various options are available for Primary (Main) Incisions. Slit Knives, NEW Short Head Slit Knives with Markings, Safety Knives, and new Short Head Crescent Knives.

Sharing with you MANI Corporate Headquarters and autumn skies from Japan.

MANI Case and Knife Handling

Handling of the Case

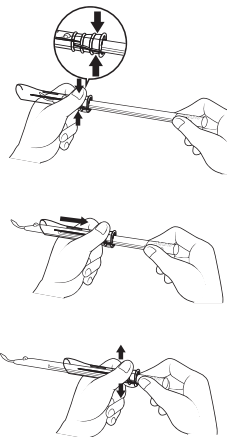


[Taking out the knife]
Pick up point (1) to pull knife from the case.

[CAUTION]
Be careful about unexpected tip collision between the case. Sharpness will be lost.

[Replacing the knife]
Set back point (2) to the bottom of the case. Then place knife down until it clicks.

Handling of the Safety Knife



[Exposing the blade]
a. Hold the rear end of the cover to unlock.
b. Keep holding and slide it towards the rear.
c. Slide the cover until it stops and release hold to lock

[Stowing the blade]
a. Hold the rear end of the cover to release the lock.
b. Slide the cover forward till the end.
c. Release hold to lock. (Reverse steps of Exposing to stow the blade)

AAO 2017

SEE YOU IN NEW ORLEANS

November 11-14, 2017
Booths #816, #919, #921, #925

Crestpoint is gearing up for AAO 2017 in New Orleans! We're making some changes to our booth and can't wait to see you at the show!

Look for our brilliant blue tower, and our extensive product display, featuring the latest. Watch for more information in our next month's *Crestpoint Rounds*.

ABOUT US

Mission Statement

Crestpoint Ophthalmics is dedicated to being the foremost, industry leading, single-source provider of the world's highest quality ophthalmic products.

We're your source for 5,000+ hand-held instruments, instrument repair service, repair/replacement program, custom instruments and reusable/disposable instruments. Our top priority is superb customer service to you.



All information in this publication is subject to change without notice.

Trademarks and copyrighted materials are property of their respective owners and are used with permission.



All product ranges in this Newsletter are exclusive in the USA.

CONTACT US

Crestpoint Management
9100 Watson Road
St. Louis, MO 63126 USA

Phone: (800) 756-7773

Phone: (314) 849-7773

Fax: (314) 849-7776

E-mail: custsvc@crestpointmgt.com

Web: www.crestpointmgt.com