

Crestpoint ROUNDS™

MAY
2018
Volume 2
Issue 4

PUBLISHED FOR ALL OPHTHALMIC AUDIENCES: SURGEONS, YOUNG EYE SURGEONS, NURSES/TECHNICIANS AND PURCHASING TEAMS

IN THIS ISSUE

MANI.....	Cover, 2, 4
Duckworth & Kent.....	3
GEUDER.....	3

Looking forward to seeing you at
AAO 2018
October 27-30 Chicago

Presenting Cutting Edge Micro-Surgical Knives

Ultimate Sharpness MANI® Disposable Ophthalmic Knife

Why is sharpness important?

- ✓ Less stress for surgeons
- ✓ Better post-surgery outcome
- ✓ Low risk of wrong perforation
- ✓ Improved patient care

MANI® Non-Glare Treatment (patented)

MANI® Bevel Shape (patented) and Crosslapped Edge

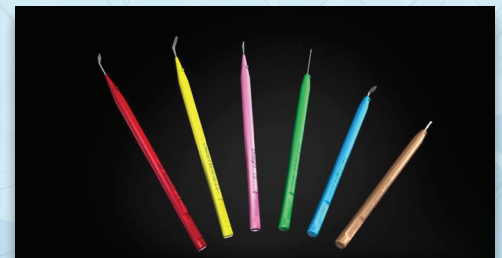
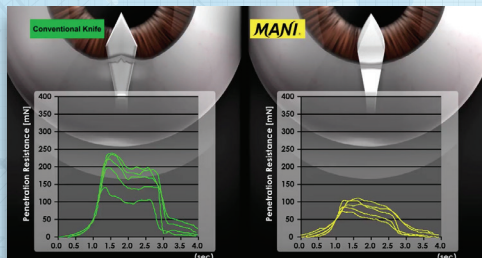
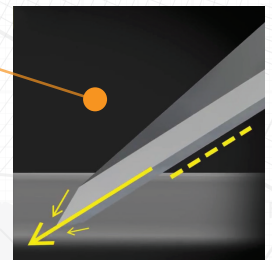
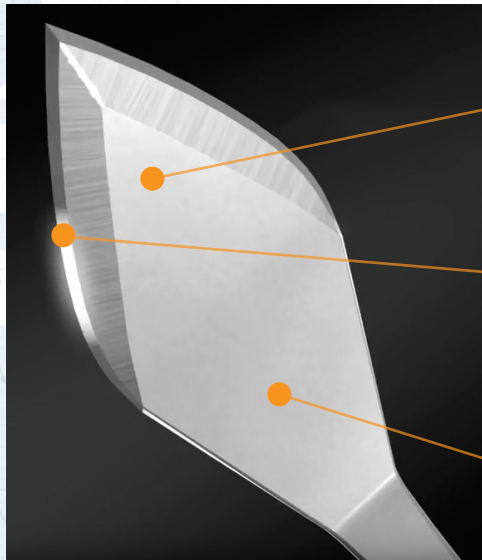
By polishing the blade slightly from the backside, the bevel shape provides excellent sharpness, usability, and stability on trajectory. The crosslapped edge and bevel shape produce MANI®'s "Ultimate Sharpness."

MANI® Original Hard Fiber Stainless Steel

Austenite stainless steel provides superior strength on the tip and ensures a thin but solid edge. Edge thickness of MANI® slit and crescent knives is 0.14mm.

MANI® Color Coded Handles
Allow easy identification.
The color is different depending on the tip shape.

MANI® Marking Knives
Laser marking assists surgeons with accurate and stable incisions.



[Click for MANI® video on YouTube](#)

MANI® ZMC003

MANI® ZMC001

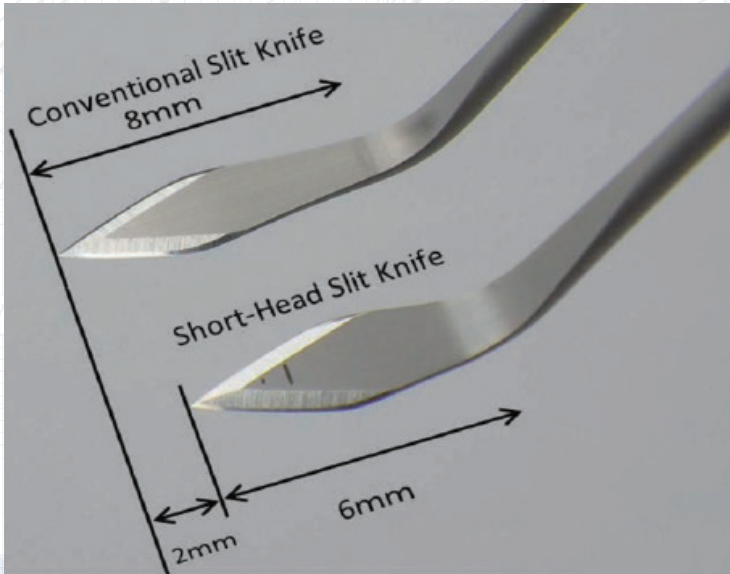
[Click for MANI® video on YouTube](#)



MANI® Short-Head Slit Knife

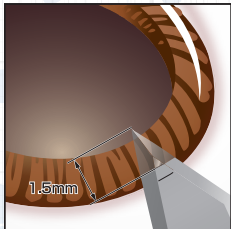
Main applications: corneal incision, scleral incision. 6 pieces/box. Effective for patients who have sunken or deep-set eyes (enophthalmos) or narrow lid fissure.

Short-Head Slit Knives MSL20SH - MSL30SH

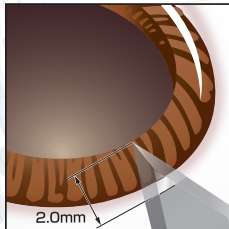


Position of knife angle moved 2.0mm towards the tip to make the blade smaller while maintaining the same "Ultimate Sharpness" as our conventional models.

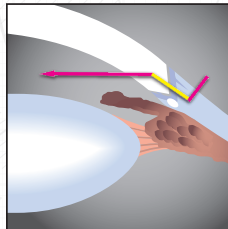
Example use of the marking lines



Corneal Incision



Scleral Incision



Perforation towards anterior chamber using the marking lines as an indicator.

Product Name	Order#
Slit Angled 2.0mm (Short-Head)	MSL20SH
Slit Angled 2.1mm (Short-Head)	MSL21SH
Slit Angled 2.2mm (Short-Head)	MSL22SH
Slit Angled 2.3mm (Short-Head)	MSL23SH
Slit Angled 2.4mm (Short-Head)	MSL24SH
Slit Angled 2.5mm (Short-Head)	MSL25SH
Slit Angled 2.65mm (Short-Head)	MSL26SH
Slit Angled 2.75mm (Short-Head)	MSL27SH
Slit Angled 2.8mm (Short-Head)	MSL28SH
Slit Angled 2.9mm (Short-Head)	MSL29SH
Slit Angled 3.0mm (Short-Head)	MSL30SH

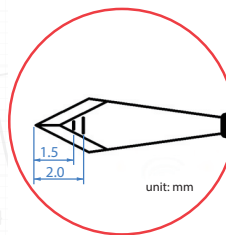
Short-Head Slit Knife

Main Application: Corneal Incision, Scleral Incision, 6pcs/box

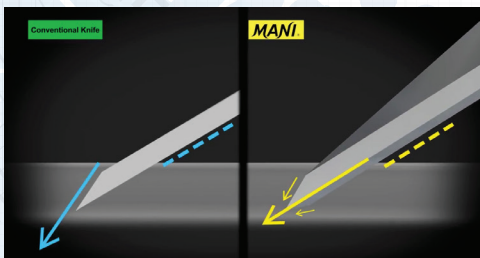


Extreme Sharpness, Simple Operation, High Visibility

The position of the knife angle is moved 2.0mm towards the tip in order to make the blade smaller while maintaining the same "Ultimate Sharpness" as our conventional models. This design is highly effective for patients with sunken/deep-set eyes or narrow lid fissures. Lower risk of contact with specula or drapes. Laser marking lines at 1.5mm and 2.0mm from the blade tip enable simple operation for creating a tunnel. MSL20~24SH=(8.0mm→6.0mm)/MSL25~30SH=(9.0mm→7.0mm)



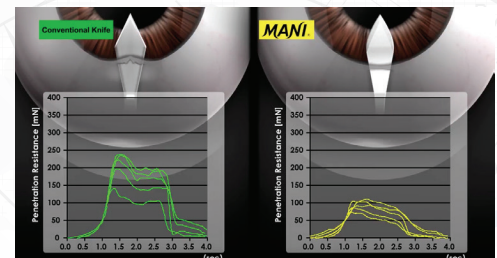
MANI®'s bevel shape (patented), crosslapped edge, and high-strength stainless steel construction produce the "Ultimate Sharpness" for a true, stable incision with higher accuracy and lower penetration resistance.



Click for video



Click for video



Click for video

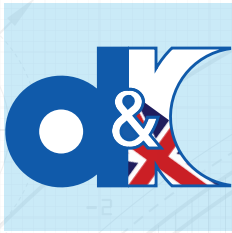
MANI®'s fine-processing technique creates the crosslapped edge, which provides excellent sharpness and consistent quality. Color-coded knife handles allow for easy identification. The color is different depending on the tip shape.



MANI slit knife - front side with Non-Glare Treatment

MANI®'s original hard fiber (austenite) stainless steel, bevel shape (patented), non-glare treatment (patented), and crosslapped edge produce the "Ultimate Sharpness."

In order to maintain sharpness, MANI®'s patented non-glare treatment is applied to knives—except the edges and back side.

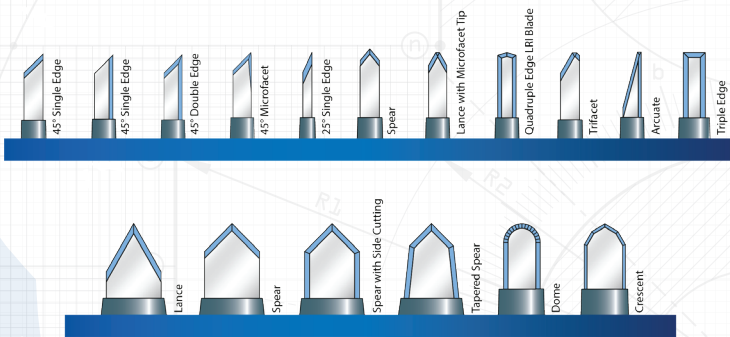


Duckworth & Kent

Original manufacturer of titanium surgical instruments for ophthalmology.

Diamond Knives

Many blade and handle styles are available. Angled Retractable Knives feature the diamond mounted at 45° angle to the handle, commonly used for creating Primary (Main) Incisions. Straight Retractable Knives feature a straight mounted diamond blade, used for free hand cutting and side port incisions.



1mm Lance Diamond Knife Straight Retractable Handle Length 124mm Tip : Width = 1mm Length = 3.5mm Thickness = 0.17mm 0.17mm	2mm Dome Diamond Knife Angled Retractable Handle Length 137mm Tip : Width = 2mm Length = 4mm Thickness = 0.2mm 0.2mm	2.8mm Spear Diamond Knife Angled Retractable Handle Length 137mm Tip : Width = 2.8mm Length = 4mm Thickness = 0.17mm 0.17mm
1mm 3.5mm 4-122	2mm 18 Facets Per Side 4mm 4-480	2.8mm 4mm 4-430



GEUDER®

Leading manufacturer of high quality surgical instruments for ophthalmology. It has always been the maxim of GEUDER to guarantee the highest degree of precision and reliability.

DIACLEAN® Diamond Knives

Grid-like handle allows for effective care and handling. Mechanical reprocessing in accordance with most recent International Guidelines for Reprocessing of Medical Devices. Blade is perfect under 500x magnification with an abrasive hardness of 140 times that of sapphire and ruby.



G31468



G38444



G38447



G38450



G38451





MANI® Laser Marking Lines

Laser marking assists surgeons with accurate and stable incisions. Engraved laser marking lines at 1.0mm and 1.2mm indicate incision width and provide guides for side port incision.

MST15MK



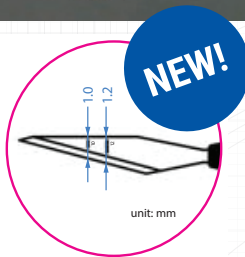
MST22MK



Marking Straight Knife

MST15MK MST22MK FEATURES

By placing the lines serving as guides of the side port width 1.0mm and 1.2mm apart, the operability has been further improved.



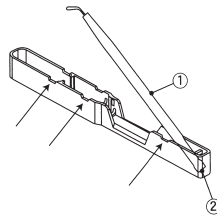
Main Application: Scleral groove incision, Side port, 6pcs/box



Product Name	Order#
Straight 15° (Marking)	MST15MK
Straight 22.5° (Marking)	MST22MK

Disposable

MANI Case and Knife Handling

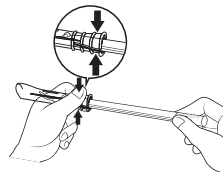


Taking out the knife
Pick up point (1) to pull knife from the case.

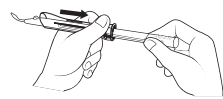
CAUTION
Be careful about unexpected tip collision between the case. Sharpness will be lost.

Replacing the knife
Set back point (2) to the bottom of the case. Then place knife down until it clicks.

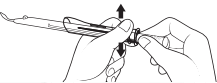
MANI Case and Safety Knife Handling



Exposing the blade
a. Hold the rear end of the cover to unlock.
b. Keep holding and slide it towards the rear.
c. Slide the cover until it stops and release hold to lock



Stowing the blade
a. Hold the rear end of the cover to release the lock.
b. Slide the cover forward till the end.
c. Release hold to lock. (Reverse steps of Exposing to stow the blade)



One Source®
SERVICE AND SUPPORT

Crestpoint ROUNDS is published monthly by Crestpoint Ophthalmics

Count on us for trusted, personalized service focused on innovation, quality, and comprehensive product selection.

We are the exclusive USA distributors for:

MANI®
DUCKWORTH & KENT®
GEUDER®
STERIMEDIX®



See You In Chicago

At AAO 2018
October 27-30, 2018

The Crestpoint team will be ready to meet and assist you at AAO 2018 in Chicago! Look for the big blue tower on the main trade show floor!



ABOUT US

Mission Statement

Crestpoint Ophthalmics is dedicated to being the foremost, industry leading, single-source provider of the world's highest quality ophthalmic products.

We're your source for 5,000+ hand-held instruments, instrument repair service, repair/replacement program, custom instruments and reusable/disposable instruments. Our top priority is superb customer service to you.



GSA/FSS Contract
V797P-4438B
Ophthalmic Instruments
Surgical Devices
SIN A8a & A8b
Effective
5/1/2011 to 4/30/2021

All information in this publication is subject to change without notice. Trademarks and copyrighted materials are property of their respective owners and are used with permission.

NWBOC
WVOSB CERTIFIED-WOMAN OWNED SMALL BUSINESS

All product ranges in this Newsletter are exclusive in the USA.

Duckworth & Kent products are exclusive in the USA and Canada.

Copyright 2018 Crestpoint Ophthalmics. All rights reserved.

CONTACT US

Crestpoint Ophthalmics
9100 Watson Road
St. Louis, MO 63126 USA

Phone: (800) 756-7773

Phone: (314) 849-7773

Fax: (314) 849-7776

E-mail: custsvc@crestpointmgt.com

Web: www.crestpointmgt.com

ZCC483NL (05/2018)